

Special Features:

- Stainless Steel Case & Ring
- Compact Design
- Provision For Zero Adjustment
- Standard Followed In General EN 837-3

Application:

Low Pressure Draft Measurement, Food & Beverages, Pharmaceutical, Breweries, Conventional, Nuclear Power Plants, Clean Air, Gaseous, Low Viscous Liquid & Non Corrosive Media that will not obstruct the Pressure System.

Standard Version:

Nominal Size: 63, 100 & 150 mm



Scale ranges

63 mm : 0-40 to 0...600 mbar

100 mm: 0-25 to 0...600 mbar

150 mm : 0-6 mbar to 0...600 mbar or other equivalent units of pressure & vacuum

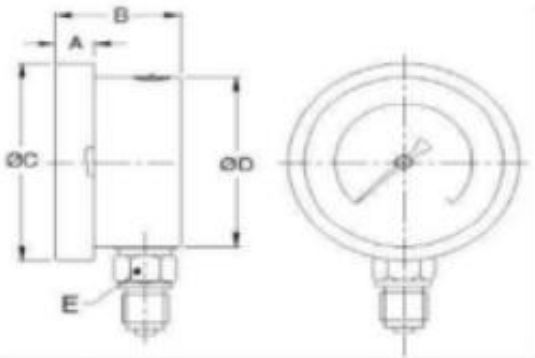
Accuracy Class	1.6
Ambient Temperature	- 25°C to + 65°C
Process Temperature	Max 100°C
Operating Pressure	75 % of scale value
Over Pressure	110% of max. scale value

Case & Bezel	AISI 304 SS (DIN case)
Capsule	AISI 316 SS
Socket	AISI 316 SS
Movement	AISI 304 SS
Joints	Tig argon arc welding

Protection	IP 65 (IP 55 for NS 63 mm)
Dial	Aluminum, black graduation on white background with zero adjustment provision

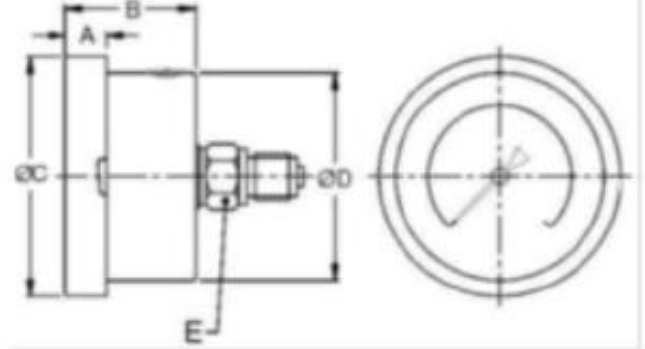
Pointer	Aluminum, black coloured, fixed
Window	Safety glass
Gasket & vent plug	Neoprene

TYPE A



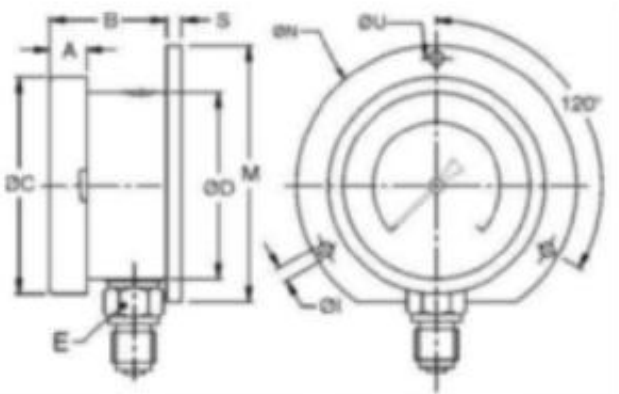
NS	A	B	OC	OD	E	Weight in gram (With Box)
63	12.5	46	77.5	66.5	A/F14	270.0

TYPE D



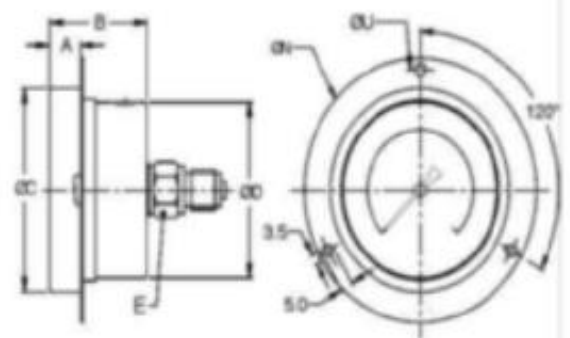
NS	A	B	OC	OD	E	Weight in gra (With Box)
63	12.5	46	77.5	66.5	A/F14	260.0

TYPE C



NS	A	B	OC	OD	E	S	ON	OI	OU	M	Weight in gram (With Box)
63	12.5	46	77.5	66.5	A/F14	7	86	3.6	75	80	300.0

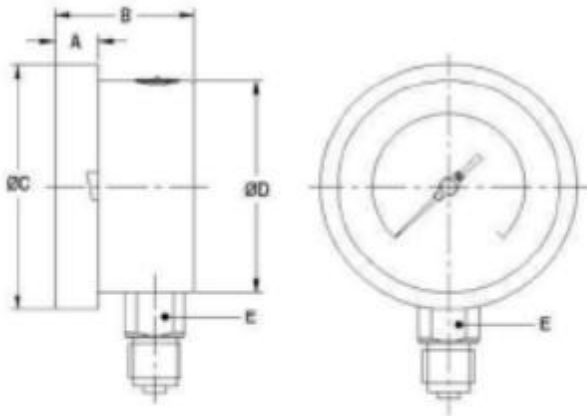
TYPE E



NS	A	B	OC	OD	E	ON	OU	Weight in gram (With Box)
63	12.5	46	77.5	66.5	A/F14	86	75	250.0

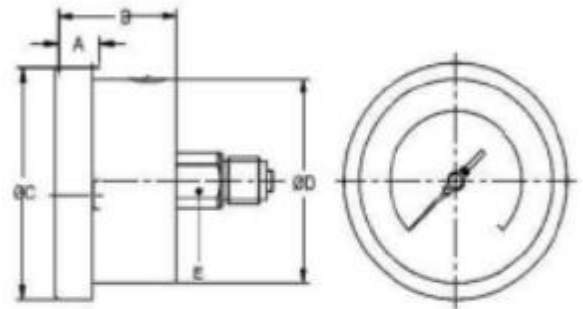
Note : Dimensions are subject to change based on product development iterations without prior notice.

TYPE A



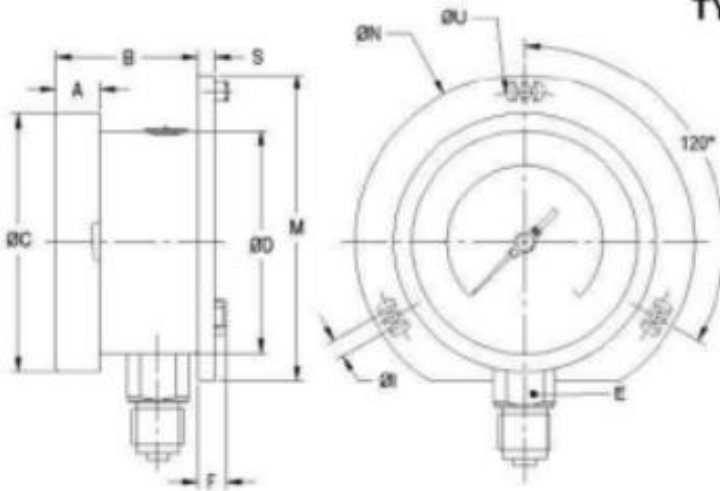
NS	A	B	OC	OD	E	Weight in gram (With Box)
100	12.5	48	111	100	22	605
150	15	49	161	149	22	1030

TYPE D



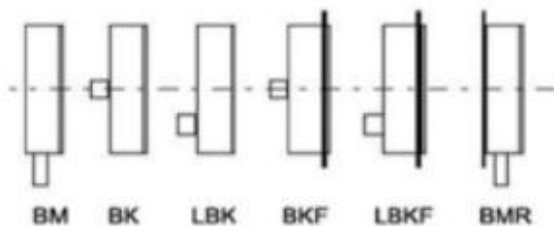
NS	A	B	OC	OD	E	Weight in gram (With Box)
100	12.5	48	111	100	22	605
150	15	49	161	149	22	1115

TYPE C



NS	A	B	OC	OD	E	M	S	F	ØI	ØN	ØU	Weight in gram (With Box)
100	12.5	48	111	100	22	128	6	14.5	6	134	118	690
150	15	49	161	149	22	174.5	5.5	15	6	186	168	1110

MOUNTING TYPE



- BM** - Bottom Connection
- BK** - Centre Back Connection
- LBK** - Off Centre Back Connection
- BKF** - Centre Back Connection with Front Flange (Panel Mounting)
- LBKF** - Off Centre Back Connection with Front Flange (Panel Mounting)
- BMR** - Bottom Connection Back Flange (Surface Mounting)

Note : Dimensions are subject to change based on product development iterations without prior notice.